

cerabone®

Natural Bovine Bone Grafting Material

Highest Reliability and Dimensional Stability

PROMED 
A PARTNERSHIP IN PRACTICE

botiss
dental

Jason®
Membrane

Pericardium Collagen Membrane

Highly Effective, Resorbable Natural Soft Tissue

PROMED 
A PARTNERSHIP IN PRACTICE

botiss
dental

**For more info call Promed
on freephone 1800 619 619**

**For more info call Promed
on freephone 1800 619 619**

Jason® Membrane Highly Effective, Resorbable Natural Soft Tissue

Jason® Membrane provides a long-lasting, adequate barrier function. Due to a unique production process, the superior properties of the native pericardium are preserved, maintaining the characteristics of this natural tissue.

Properties

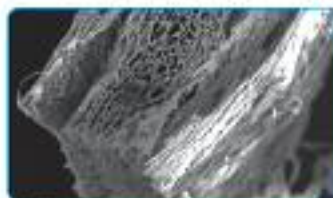
- Long-lasting barrier function: wound protection and stabilisation of blood clot in the defect space
- Biocompatible: no removal necessary; remodeled into connective tissue through body own tissue healing processes
- Cell-occlusive: promotes osteoblast and periodontal ligament cell proliferation while excluding gingival cell invasion
- Stability: multidirectional strength and tear resistance, accepts a wide range of sutures and fixation devices
- Drapability: supple but strong, with exceptional adaptability to surface contours
- Rapid rehydration and easy manipulation: ease of placement and conformity to graft site
- Three convenient sizes can be cut to shape for specific procedures

Indications: Implantology, Periodontology & Oral surgery

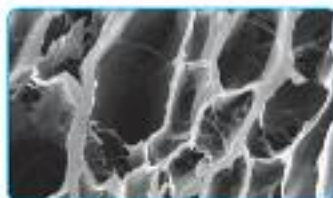
- Simultaneous use of GBR-membrane (Jason® Membrane), bone substitutes and implants
- Augmentation around implants placed immediately or delayed extraction sockets
- Localized ridge augmentation for laser implantation
- Alveolar ridge reconstruction for prosthetic treatment
- Filling of bone defects after root resection, osteotomy, removal of retained teeth
- Guided bone regeneration in dentosauce defects
- Socket preservation
- Protection of the Schneiderian membrane
- Covering of minor perforations of the Schneiderian membrane

Product Specifications Jason® Membrane

Article No.	Dimension	Content
0661520	15 x 20 mm	1 piece
0662130	20 x 30 mm	1 piece
0663010	30 x 40 mm	1 piece



SEM Jason® Membrane



SEM Jason® Membrane 3D-structure



Histology of Jason® Membrane 1 week after implantation shows perfect integration without inflammatory reaction



For more info call Promed on freephone 1800 619 619



Jason® Membrane packaging



Jason® Membrane

bollis dental GmbH
www.bollis.com

cerabone® Natural Bovine Bone Grafting Material

Cerabone® is a highly reliable, dimensional stable, purified natural bovine bone grafting material. The mineral composition, the three dimensional structure and the physico-chemical and biological properties of Cerabone® are very similar to those of human bone.

The unique manufacturing process with high-temperature heating removes all organic components and eliminates all potential immunological reactions. Cerabone® is 100% BSE-safe and 100% protein-free.

Cerabone® fulfills all requirements of the Annex II.4 of the Directive 93/42/EEC and the Directive 2002/32/EC.

Properties

- natural bovine bone grafting material
- slow resorption and directed integration by new bone formation
- long-term dimensional stability
- osteoconductive
- 100% pure bone mineral
- no foreign body or inflammatory reaction
- hydrophilic surface, optimal cell adhesion and blood absorption
- interconnected porosity
- salt and sterile
- easy handling

Indications: Implantology, Periodontology & Oral Surgery

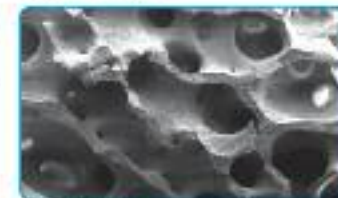
- Sinus lift
- Horizontal augmentation
- Intraosseous defects
- Peri-implant defects
- Extraction sockets
- Vertical augmentation
- Furcation defects

Product Specifications Cerabone® Granulas

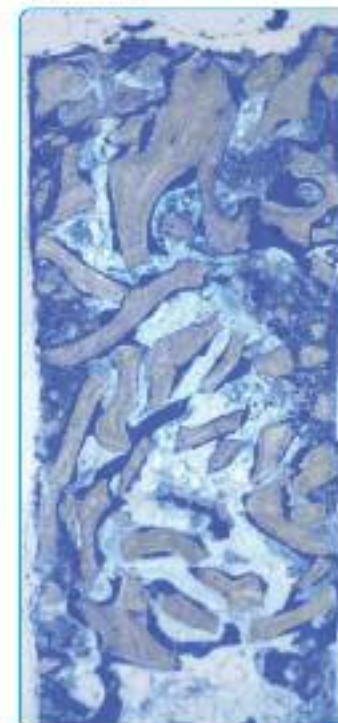
Article No.	Particle Size	Content	Article No.	Particle Size	Content
1510	0.5-1.0mm	1 x 0.5cc (ml)	1520	1.0-2.0mm	1 x 0.5cc (ml)
1511	0.5-1.0mm	1 x 1.0cc (ml)	1521	1.0-2.0mm	1 x 1.0cc (ml)
1512	0.5-1.0mm	1 x 2.0cc (ml)	1522	1.0-2.0mm	1 x 2.0cc (ml)
1515	0.5-1.0mm	1 x 5.0cc (ml)	1525	1.0-2.0mm	1 x 5.0cc (ml)



SEM Human bone



SEM Cerabone®



Histology of Cerabone® 6 months after sinus lift. Optimal integration and bone healing with Cerabone®



Cerabone® Granulas in Blister



Cerabone® Granulas

For further info call Promed on FREEPHONE 1800 619 619

bollis dental GmbH
www.bollis.com