


# Vasofix® Safety

## Product overview

Vasofix® Safety	Gauge	Catheter length		Catheter ø (mm)	Flow rate (ml/min)	Units per box	Code no. REF	
		(inch)	(mm)				FEP*	PUR*
	24	¾	19	0.70	22	50	-	4269071S-01
	22	1	25	0.90	36		4268091S-01	4269098S-01
	20	1	25	1.10	65		-	4269217S-01
	20	1 ¼	33	1.10	61		4268113S-01	4269110S-01
	18	1 ¼	33	1.30	103		4268334S-01	4269330S-01
	18	1 ¾	45	1.30	96		4268130S-01	4269136S-01
	17	1 ¾	45	1.50	128		4268156S-01	4269152S-01
	16	2	50	1.70	196		4268172S-01	4269179S-01
	14	2	50	2.20	343		4268210S-01	4269225S-01

\* Catheter material.  
All products are PVC-, DEHP- and latex/natural rubber-free

### Literature

- Tosini W, Ciotti C, Goyer F, Lolom I, L'Heriteau F, Abiteboul D, et al. Needlestick Injury Rates According to Different Types of Safety-Engineered Devices: Results of a French Multicenter Study. *Infect Control Hosp Epidemiol.* 2010 Apr;31(4):402-7.
- Suzuki T, Fukuyama H, Nishiyama J, Oda M., Takahashi M. Differences in Penetration Force of Intravenous Catheters: Effect of Grinding Methods on Inner Needles of Intravenous Catheters. *Tokai J Exp Clin Med.* 2004; 29(4): 175-181.
- Sossai D. et al. Efficacy of safety catheter devices in the prevention of occupational needlestick injuries: applied research in the Liguria Region (Italy). *J Prev Med Hyg.* 2016; 57: E110-E114.
- Maki D.G. Ringer M. Risk Factors for infusion-related Phlebitis with Small Peripheral Venous Catheters: A randomized Controlled Trial. *Ann Intern Med.* 1991 May 15; 114(10):845-54.
- Gorski, L. et al. Infusion Therapy: Standards of practice. *Journal of Infusion Nursing.* 2016; Vol 39 (1S): S72-73.
- Schears G. Summary of Product Trials for 10,164 Patients: Comparing an Intravenous Stabilizing Device to Tape. *J Infus Nurs.* August 2006; 29(4):225-31.
- Mensor L, Dirogio D, Souza C, Contadin R. Cost-Effectiveness of safety engineered peripheral catheters with an integrated stabilization platform under the perspective of hospitals in Brazil. *BR J of Health Econ.* April 2016;18(1):3-10.
- Cooper D, Whitfield M.D, Newton D, Chiarella J, Machaczek KK. Introduction of a non-ported peripheral intravenous catheter with multi-use blood control septum offers improvements in the overall efficiency of the procedure and is clinically well accepted. *Int. J of Healthcare Techn and Mgmt.* January 2016; 1-20.
- Moergeli et al. A comparison of first attempt cannulation success of peripheral venous catheter systems with and without wings and injection ports in surgical patients—a randomized trial. *BMC Anesthesiology.* 2022 (88): 1-11.
- Jagger J, Bentley MB. Injuries from vascular access devices: high risk and preventable. *Collaborative EPINet Surveillance Group. Journal of Infusion Nursing.* 1997 Nov-Dec;20(6 Suppl):S33-9.

### Learn more about Vasofix® Safety



Download the handling poster:  
Vasofix® Safety – IV catheter



Download the brochure:  
Patient access in infusion therapy

# Vasofix® Safety

Safety IV catheter with injection port & automatic needlestick protection



# Vasofix® Safety

Safety IV catheter with injection port & automatic needlestick protection

## Making IV access ...

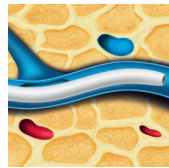
### ... comfortable for patients

The catheter material assures an easy and smooth catheter advancement for a high patient comfort. Available in **PUR** (polyurethane) for softer, more comfortable, longer in-dwelling performance<sup>4</sup> and kink resistance, or **FEP** with firmer construction.



#### Radiopaque stripes

- Radiopaque stripes for good visibility under X-rays



#### PUR

- Soft at body temperature
- Proven to have positive impact on indwell time and phlebitis risk<sup>4</sup>

### ... safer for patients

A poorly secured IV catheter poses a risk for IV complications such as dislodgement, infiltration, extravasation or phlebitis. The integrated fixation wings are designed to minimize catheter movement to help reduce catheter-related complications.<sup>5,6,7</sup>



#### Fixation wings

- Designed to improve catheter stability
- Flexible wings adapt to skin surface for highest patient comfort
- Holes for ventilation

#### Removable flash plug & removable closing cone

- Hydrophobic membrane avoids blood exposure
- Removable flash plug permits attachment of a syringe for aspiration and other special procedures
- Removable closing cone allows to directly close off the catheter with one hand



### ... convenient for patients

The unique geometry of the universal back cut bevel aids in accessing difficult veins by providing a highly flexible pathway for easy catheter insertion with less tearing.<sup>2</sup>



#### Universal back cut bevel

- Wide choice of insertion angles
- Designed for minimal puncture trauma<sup>2</sup>
- Insertion with less tissue tearing (V-cut)<sup>2</sup>

### ... safer for clinicians

Needlestick injuries (NSI) continue to be one of the highest risks clinicians face during their daily routine: 62% of NSI occur after use, during disposal.<sup>10</sup> Studies show that passive, fully automatic safety devices are most effective in NSI prevention.<sup>1,3</sup> With B. Braun's Vasofix® Safety, clinicians are protected by a truly automatic safety device.



#### Passive safety shield

- Deploys automatically
- Cannot be bypassed
- Requires no use activation

### ... user-friendly

Designed for a precise medication and a high versatility in intravenous treatment.



#### Injection port

- For a quick and easy injection without interruption of infusion<sup>9</sup>
- Allows needle-free injection
- Grip edges for an easy opening
- Possibility to close-off injection port to inhibit patient's access by turning the protective cap 180 degrees

### ... more successful

Multiple attempts to establish an IV access can lead to a delay in treatment. The double flashback technology of Vasofix® Safety helps to support first stick success<sup>9</sup> through quick visual confirmation that both – needle and catheter – are successfully in the vein.<sup>8</sup>



Needle-flash



Catheter-flash

#### Double flashback technology

- Supports first stick success<sup>9</sup>
- Needle-flash confirms needle is in the vein
- Catheter-flash confirms catheter placement<sup>8</sup>

### ... effortlessly adaptable to user needs

#### Handling flexibility

Unparalleled flexibility is achieved by offering distinct handling and insertion possibilities for diverse needs, a secure hold and precise control.



1 Grip plate and port



2 Wings and closing cone



3 Closing cone and port

**Easy to use:** No extra steps needed to prepare the catheter for insertion.

### Full portfolio

Offering a wide range of gauge sizes (G14-G24) and catheter lengths (19-50mm)

