


Vasofix®	Gauge	Catheter length		Catheter ø (mm)	Flow rate (ml/min)	Units per box	Code no. REF	
		(inch)	(mm)				FEP*	PUR*
	24	¾	19	0.70	22	50	-	4269071
	22	1	25	0.90	36		4268091B	4269098
	20	1	25	1.10	65		-	4269217
	20	1 ¼	33	1.10	61		4268113B	4269110
	18	1 ¼	33	1.30	103		4268334B	4269330
	18	1 ¾	45	1.30	96		4268130B	4269136
	17	1 ¾	45	1.50	128		4268156B	4269152
	16	2	50	1.70	196		4268172B	4269179
	14	2	50	2.20	343		4268210B	4269225

* Catheter material.
All products are PVC-, DEHP- and latex/natural rubber-free

Literature

1. Suzuki T., Fukuyama H., Nishiyama J., Oda M., Takahashi M. Differences in Penetration Force of Intravenous Catheters: Effect of Grinding Methods on Inner Needles of Intravenous Catheters. Tokai J Exp Clin Med. 2004; 29(4): 175-181.
2. Maki D.G. Ringer M. Risk Factors for infusion-related Phlebitis with Small Peripheral Venous Catheters: A randomized Controlled Trial. Ann Intern Med. 1991 May 15; 114(10):845-54.
3. Gorski, L. et al. Infusion Therapy: Standards of practice. Journal of Infusion Nursing. 2016; Vol 39 (15): S72-73.
4. Scheers G. Summary of Product Trials for 10,164 Patients: Comparing an Intravenous Stabilizing Device to Tape. J Infus Nurs. August 2006; 29(4):225-31.
5. Mensor L. Dirogio D. Souza C. Contadin R. Cost-Effectiveness of safety engineered peripheral catheters with an integrated stabilization platform under the perspective of hospitals in Brazil. BR J of Health Econ. April 2016;18(1):3-10.
6. Cooper D. Whitfield M.D. Newton D. Chiarella J. Machaczek KK. Introduction of a non-ported peripheral intravenous catheter with multi-use blood control septum offers improvements in the overall efficiency of the procedure and is clinically well accepted. Int. J of Healthcare Techn and Mgmt. January 2016; 1-20.
7. Moergeli et al. A comparison of first attempt cannulation success of peripheral venous catheter systems with and without wings and injection ports in surgical patients—a randomized trial. BMC Anesthesiology. 2022 (88): 1-11.

Learn more about Vasofix®



Download the handling poster:
Vasofix® – IV catheter

Vasofix®

IV catheter with injection port



Making IV access ...

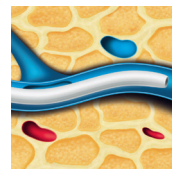
... comfortable for patients

The catheter material assures an easy and smooth catheter advancement for a high patient comfort. Available in **PUR** (polyurethane) for softer, more comfortable, longer in-dwelling performance² and kink resistance, or **FEP** with firmer construction.



Radiopaque stripes

- Radiopaque stripes for good visibility under X-rays



PUR

- Soft at body temperature
- Proven to have positive impact on indwell time and phlebitis risk²

... safer for patients

A poorly secured IV catheter poses a risk for IV complications such as dislodgement, infiltration, extravasation or phlebitis. The integrated fixation wings are designed to minimize catheter movement to help reduce catheter-related complications.^{3,4,5}



Fixation wings

- Designed to improve catheter stability
- Flexible wings adapt to skin surface for highest patient comfort
- Holes for ventilation

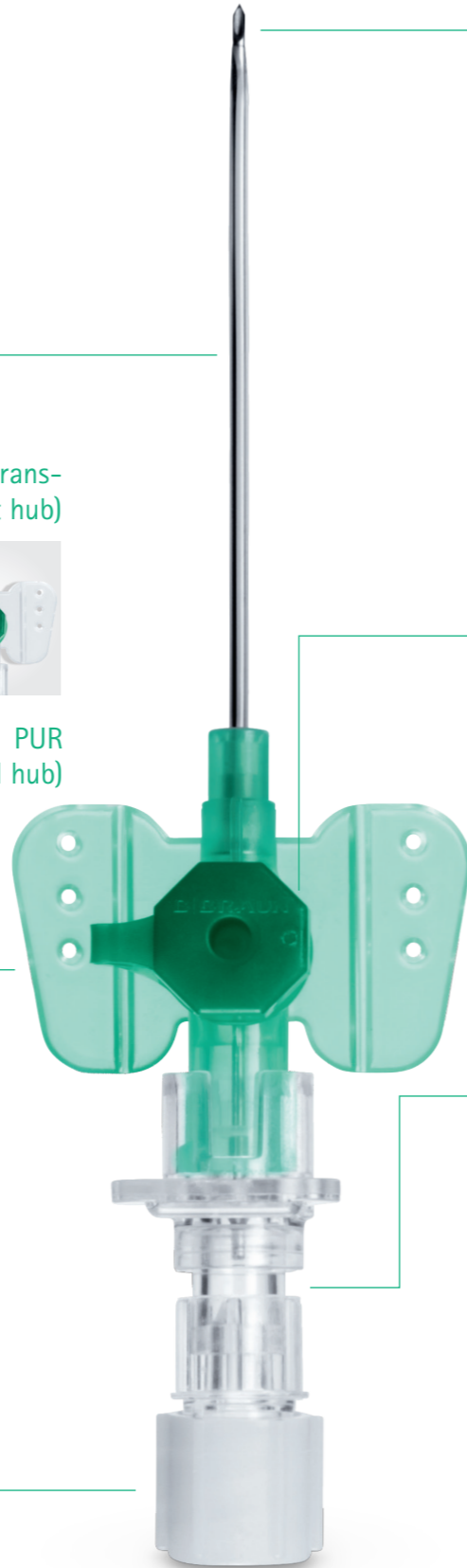
Removable flash plug & removable closing cone

- Hydrophobic membrane avoids blood exposure
- Removable flash plug permits attachment of a syringe for aspiration and other special procedures
- Removable closing cone allows to directly close off the catheter with one hand

FEP (transparent hub)



PUR (colored hub)



... convenient for patients

The unique geometry of the universal back cut bevel aids in accessing difficult veins by providing a highly flexible pathway for easy catheter insertion with less tearing.²



Universal back cut bevel

- Wide choice of insertion angles
- Designed for minimal puncture trauma²
- Insertion with less tissue tearing (V-cut)²

... user-friendly

Designed for a precise medication and a high versatility in intravenous treatment.



Injection port

- For a quick and easy injection without interruption of infusion⁷
- Allows needle-free injection
- Grip edges for an easy opening
- Possibility to close-off injection port to inhibit patient's access by turning the protective cap 180 degrees

... more successful

Multiple attempts to establish an IV access can lead to a delay in treatment. The double flashback technology of Vasofix® helps to support first stick success⁷ through quick visual confirmation that both – needle and catheter – are successfully in the vein.⁶



Needle-flash



Catheter-flash

Double flashback technology

- Supports first stick success⁷
- Needle-flash confirms needle is in the vein
- Catheter-flash confirms catheter placement⁶

... effortlessly adaptable to user needs

Handling flexibility

Unparalleled flexibility is achieved by offering distinct handling and insertion possibilities for diverse needs, a secure hold and precise control.



1

Grip plate and port



2

Wings and closing cone



3

Closing cone and port

Easy to use: No extra steps needed to prepare the catheter for insertion.

Full portfolio

Offering a wide range of gauge sizes (G14-G24) and catheter lengths (19-50mm)



PUR (colored hub)



FEP (transparent hub)